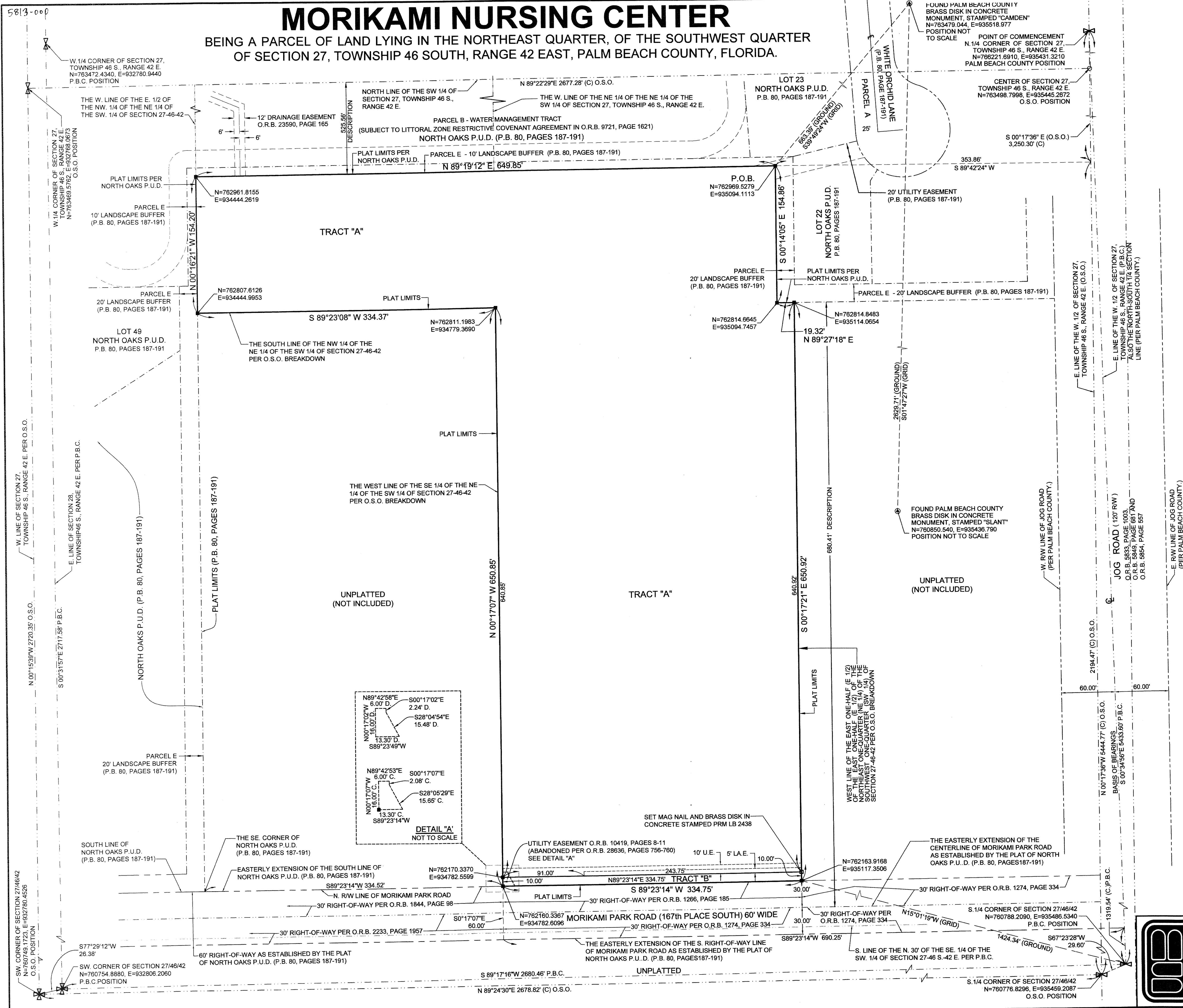


# MORIKAMI NURSING CENTER

BEING A PARCEL OF LAND LYING IN THE NORTHEAST QUARTER, OF THE SOUTHWEST QUARTER OF SECTION 27, TOWNSHIP 46 SOUTH, RANGE 42 EAST, PALM BEACH COUNTY, FLORIDA.

124

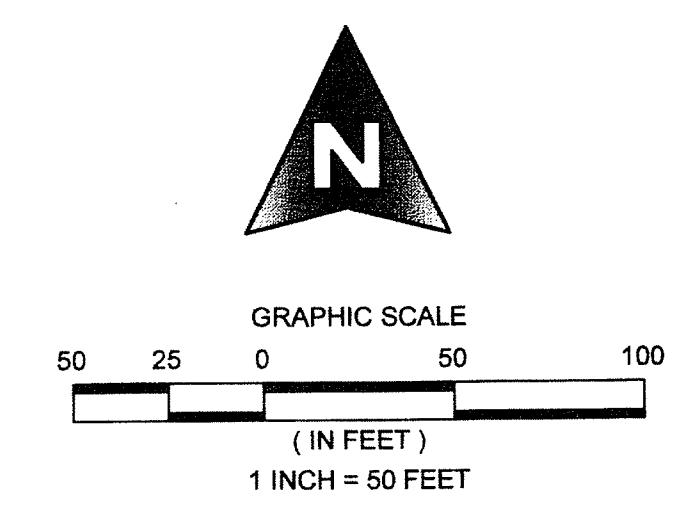
COUNTY OF PALM BEACH )  
STATE OF FLORIDA ) SS  
THIS PLAT WAS FILED FOR RECORD AT )  
M. THIS ) DAY OF )  
ON PAGE ) THRU )  
RECORDED IN PLAT BOOK NO. )  
BY: ) D.C.



**LEGEND**

P.O.C.	POINT OF COMMENCEMENT
P.O.B.	POINT OF BEGINNING
P.R.M.	PERMANENT REFERENCE MONUMENT
O.R.B.	OFFICIAL RECORD BOOK
P.B.	PLAT BOOK
PGS.	PAGES
D.B.	DEED BOOK
P.B.C.	PALM BEACH COUNTY
R.W.	RIGHT OF WAY
C.L.	CENTERLINE
U.E.	UTILITY EASEMENT
D.E.	DRAINAGE EASEMENT
R	RADIUS
L	ARC LENGTH
Δ	CURVE CENTRAL ANGLE
●	DENOTES FOUND PALM BEACH COUNTY DISK IN CONCRETE
■	SET 4"x4"x24" C.M. WITH ALUMINUM DISK, STAMPED P.R.M. L.B. 2438
□	DENOTES SET P.R.M. (AS SHOWN)
L.M.E.	LAKE MAINTENANCE EASEMENT
C.L.	CHORD LENGTH
C.B.	CHORD BEARING
L.M.A.E.	LAKE MAINTENANCE ACCESS EASEMENT
R.L.	RADIAL LINE
TYP.	TYPICAL
N	NORTHING, WHEN USED WITH COORDINATES
E	EASTING, WHEN USED WITH COORDINATES
S.E.	SEWER EASEMENT
W.E.	WATER EASEMENT
L.B.E.	LANDSCAPE BUFFER EASEMENT
L.A.E.	LIMITED ACCESS EASEMENT
L.S.E.	LIFT STATION EASEMENT
FD.	FOUND
O.A.	OVERALL
C.M.	CONCRETE MONUMENT
F.P.L.	FLORIDA POWER AND LIGHT
L.F.E.	LANDSCAPE EASEMENT
NO.	NUMBER
P.B.C.U.E.	PALM BEACH COUNTY UTILITY EASEMENT
O.S.O.	O'BRIEN, SUITER AND O'BRIEN
C.	CALCULATED
D.	DEED

**COORDINATE NOTE:**  
STATE PLANE COORDINATES SHOWN ARE GRID DATUM, NAD 83 1990 ADJUSTMENT, FLORIDA EAST ZONE, COORDINATE SYSTEM 1983 STATE PLANE, TRANSVERSE MERCATOR PROJECTION  
LINEAR UNIT = US SURVEY FEET  
ALL DISTANCES ARE GROUND  
SCALE FACTOR = 1.0000303  
GROUND DISTANCE X SCALE FACTOR = GRID DISTANCE  
BEARINGS AS SHOWN HEREON ARE GRID DATUM, NAD 83 1990 ADJUSTMENT, FLORIDA EAST ZONE.



SHEET 2 OF 2

**MICHAEL B. SCHORAH & ASSOCIATES, INC.**  
1850 FOREST HILL BLVD., SUITE 206  
WEST PALM BEACH, FLORIDA 33406  
E#B 2438 TEL. (561) 968-0080 FAX. (561) 642-9726 L#B 2438

**MORIKAMI NURSING CENTER**